

THINK BEFORE YOU GLOVE!

CHOOSING THE RIGHT GLOVE



andway
healthcare in hand

4 SIMPLE STEPS TO GLOVE USE

The inappropriate use of medical gloves can cause unnecessary costs, undue worry amongst patients and the public, lead to skin problems, impact on the environment and is a waste of valuable resources. Use this guide to select the most cost effective, suitable glove for your procedure.

01 RISK ASSESS & DECIDE

Risk assess the task to be undertaken using this Think Before You Glove! guide.

02 SELECT

Select the correct glove product.

03 USE

Use as a single use item and dispose of as clinical waste after each task / procedure / episode of care.

04 DECONTAMINATION & HAND HYGIENE

- Gloves do not replace good hand washing.
- Always wash your hands after removing your gloves.
- Apply aqueous based hand creams only.

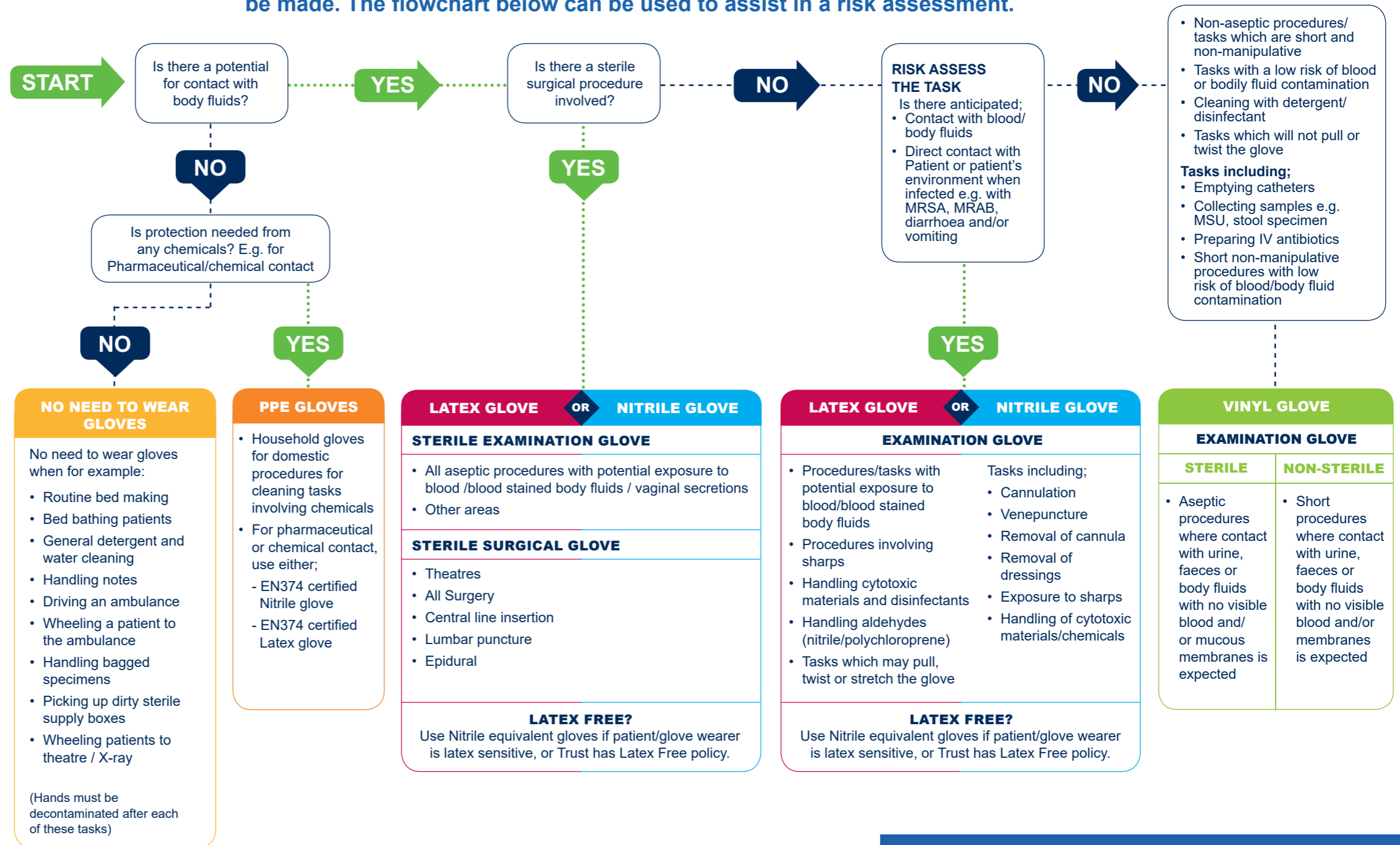
Infection Prevention & Control

Always adhere to local Infection Prevention and Control guidelines.



To assist in the busy hospital environment, Premier® and Healthgard™ Medical Examination gloves have a unique, but simple, product information key that presents all the information in a clear, concise and consistent way.

Gloves are produced from many different materials, each with specific properties for specific applications. Following a full and informed risk assessment, the correct glove choice can be made. The flowchart below can be used to assist in a risk assessment.



This flyer contains information on Medical and PPE Gloves

To view our full range of Medical Gloves, visit andwayhealthcare.com

T: 0333 600 1400

E: sales@andwayhealthcare.org.uk